



PRODUCT DATA SHEET



7CBH57HCFG
Jc' HJ[Y'GY'YMcb'7\ Ufh'
@7%8%&%\$!LL

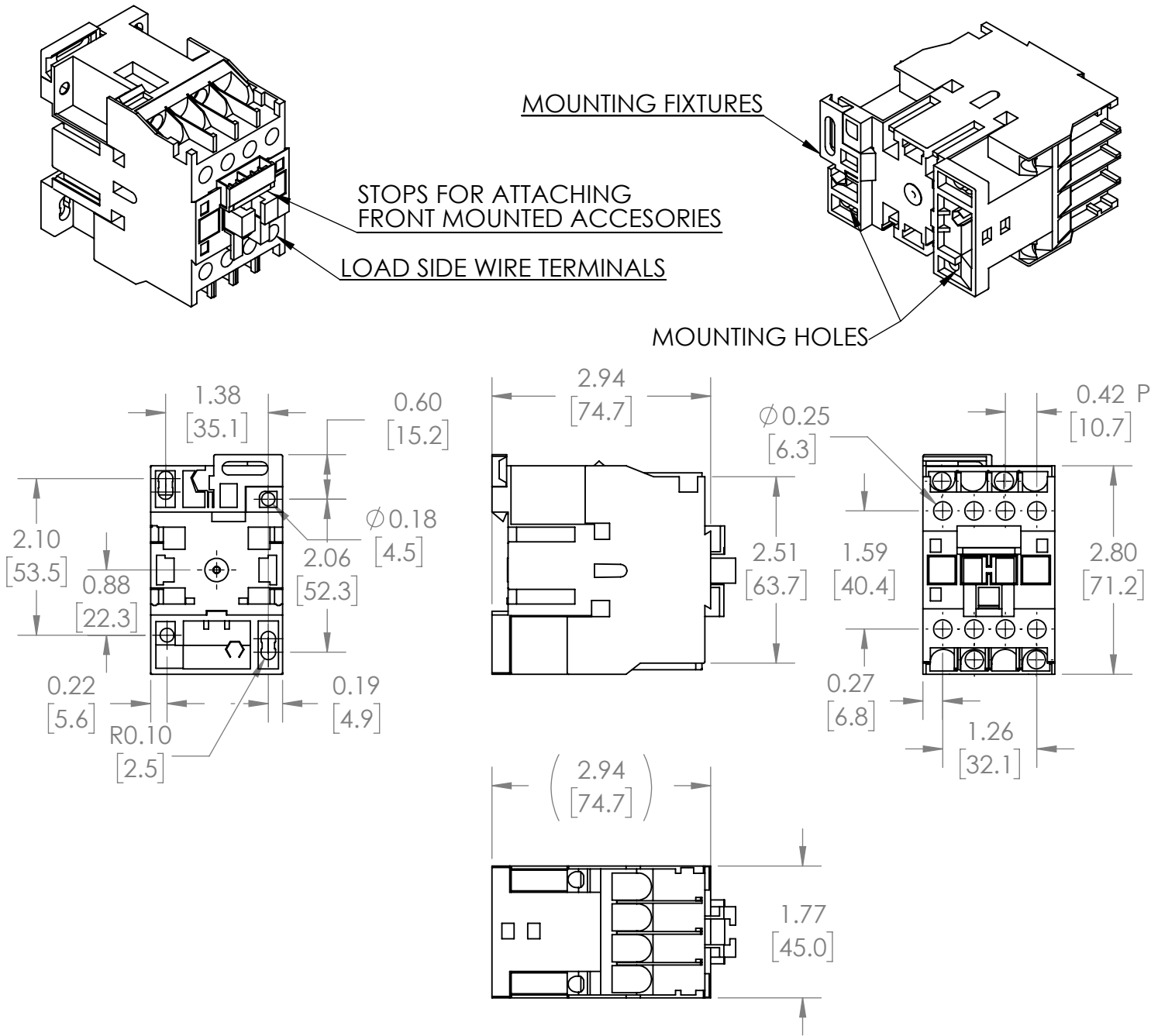
@7%8%&%\$	%%\$#%&\$J 57
6*	&(J 57
6+	&(J 57
9+	(, J 57
; *	%%\$#%&\$J 57
; +	%%\$#%&\$J 57
@9+	&\$, J 57
A *	&&\$J 57
A +	&&\$J 57
D+	&' \$J 57
E *	', \$J 57
E +	', \$J 57
F+	((\$J 57
H*	(, \$J 57
I *	&(\$J 57
I +	&(\$J 57
J +	(\$ \$J 57

PART NUMBER – LC1D1210: Aftermarket direct replacement contactors for Telemecanique LC1D1210, TeSys D Series, type LC1D, 3P, 3PH, 25A, 600V, voltage max 7.5 hp, 1 N/O auxiliary contact, AC magnetic contactor, suitable for use with LC1-D series motor control systems.

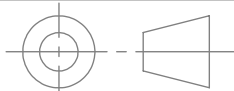
PRODUCT SPECIFICATIONS

Manufacturer	GLORY
Sub-Category	Contactors
Family	TeSys D
Type	LC1D
Phase	3
Poles	3
Voltage	600
Amperage	25
Coil Voltage Max	7.5 (HP)

REVISIONS				
ZONE	REV.	DESCRIPTION	DATE	APPROVED



***NOTE: BRAH ELECTRIC CONTACTOR LC1D1210 IS AN AFTERMARKET DIRECT REPLACEMENT FOR LC1D1210, SERIES. SUITABLE FOR USE WITH LC1-D SERIES MOTOR CONTROL SYSTEMS**

 <p>THIRD ANGLE PROJECTION</p>	UNLESS OTHERWISE NOTED		MAGNETIC CONTACTOR	
	ALL DIMENSIONS ARE IN INCHES METRIC UNITS ARE DISPLAYED BENEATH IN [MM.]			
<p>PROPRIETARY AND CONFIDENTIAL</p> <p>THE INFORMATION CONTAINED IN THIS DRAWING IS THE SOLE PROPERTY OF BRAH ELECTRIC. ANY REPRODUCTION IN PART OR AS A WHOLE WITHOUT THE WRITTEN PERMISSION OF BRAH ELECTRIC IS PROHIBITED.</p>	MATERIAL	N/A		
	FINISH			
	DO NOT SCALE DRAWING		SIZE	DWG. NO.
		A	LC1D1210	A
		SCALE:1:2	WEIGHT: 3.2 LBS	SHEET 1 OF 1